



European
Commission

May 2018

Statistical Factsheet

Estonia



CONTENTS

Main figures	1
1. KEY DATA	2
2. POPULATION & ECONOMY	3
3. FINANCIAL ASPECTS	4-5
4. ECONOMIC ACCOUNTS	6-12
5. AGRICULTURAL TRADE	13-14
6. FARM STRUCTURE	15-16

Main figures - Year 2017		
Population (1 st January)	1 315 635	persons
Area*	45 227	km ²
Currency	EUR	euro
Nominal GDP at current prices	22 963	million EUR
GDP per capita at current prices	17 398	EUR
GDP per capita at purchasing power	22 618	PPS
Harmonised index of consumer prices	3.7%	change over previous year
Unemployment rate	6.9	% of labour force
Exports (goods & services)	16 252	million EUR
Imports (goods & services)	16 084	million EUR
Balance (goods & services)	888	million EUR
Exports of agricultural products	1 047	million EUR
Imports of agricultural products	1 419	million EUR
Current account balance	1.7	% of GDP
General government balance	-0.2	% of GDP
General government gross debt	9.2	% of GDP

Sources: European Commission, Eurostat, and Directorate General for Economic and Financial Affairs.

Updated: May 2018

* Data refer to the year 2015

1. KEY DATA

Macroeconomics				
Population (new European Commission methodology)				
Total population (number of persons), of which:	2016	1 315 944	0.3%	of EU-28
in predominantly rural regions (PR)	2016	45.0%	19.2%	in EU-28
in intermediate regions	2016	11.1%	36.0%	in EU-28
in predominantly urban regions	2016	43.9%	44.8%	in EU-28
Population in PR regions (number of persons)	2016	591 599	0.6%	of EU-28
GDP				
In EUR (current prices):				
Million EUR	2017	22 963	0.1%	of EU-28
GDP per capita	2017	17 398	29 833	in EU-28
GDP per capita (PPS)	2017	22 618	29 833	in EU-28
Real GDP growth rate (% change over previous year)	2017	4.4%	2.3%	in EU-28
Gross value added				
Agriculture, forestry and fishing (% of total GVA)	2017	2.8%	1.6%	in EU-28
Financial aspects				
Agricultural expenditure				
Total expenditure (million EUR), of which:	2017	247.1	0.0%	of EU-28
Direct payments (%)	2017	46.1%	70.6%	in EU-28
Market measures (%)	2017	4.2%	5.1%	in EU-28
Rural development (%)	2017	49.7%	24.3%	in EU-28
Economic accounts of agriculture				
Agricultural output				
Agricultural goods output (million EUR), of which:	2017	798.9	0.2%	of EU-28
Crop output, of which:	2017	47.3%	0.2%	of EU-28
Cereals (including seeds)	2017	21.8%	0.4%	of EU-28
Industrial crops	2017	11.5%	0.4%	of EU-28
Forage plants	2017	7.3%	0.2%	of EU-28
Vegetables and horticultural products	2017	4.6%	0.1%	of EU-28
Potatoes	2017	0.9%	0.1%	of EU-28
Fruits	2017	1.2%	0.0%	of EU-28
Wine	2017	0.0%	0.0%	of EU-28
Olive oil	2017	0.0%	0.0%	of EU-28
Animal output, of which:	2017	52.7%	0.2%	of EU-28
Cattle	2017	6.3%	0.2%	of EU-28
Pigs	2017	8.8%	0.2%	of EU-28
Sheep and goats	2017	0.3%	0.0%	of EU-28
Poultry	2017	3.7%	0.1%	of EU-28
Milk	2017	30.8%	0.4%	of EU-28
Eggs	2017	1.6%	0.1%	of EU-28
Gross value added at basic prices (million EUR)	2017	225.3	0.1%	of EU-28
Agricultural input				
Total intermediate consumption (million EUR)	2016	656.6	0.3%	of EU-28
Agricultural income				
Indicator A (% change over previous year)	2017	54.7%	8.4%	in EU-28
Farm structure				
Holdings				
Total (No), of which:	2013	19 190	0.2%	of EU-28
UAA < 5 ha (%)	2013	33.0%	66.3%	in EU-28
Economic size < 4 000 €	2013	60.4%	55.7%	in EU-28
Holder < 35 years (%)	2013	7.5%	6.0%	in EU-28
Holder > 64 years (%)	2013	30.4%	31.1%	in EU-28
UAA per holding (has)	2013	49.9	16.1	in EU-28
Labour force				
Persons (No), of which:	2013	44 220	0.2%	of EU-28
Women (%)	2013	43.8%	41.8%	in EU-28
Holders (%)	2013	36.8%	46.8%	in EU-28
Agriculture in % of total employment	2016	3.9%	4.0%	in EU-28

Sources: European Commission, Eurostat and Directorate General for Agriculture and Rural Development.

Updated: May 2018

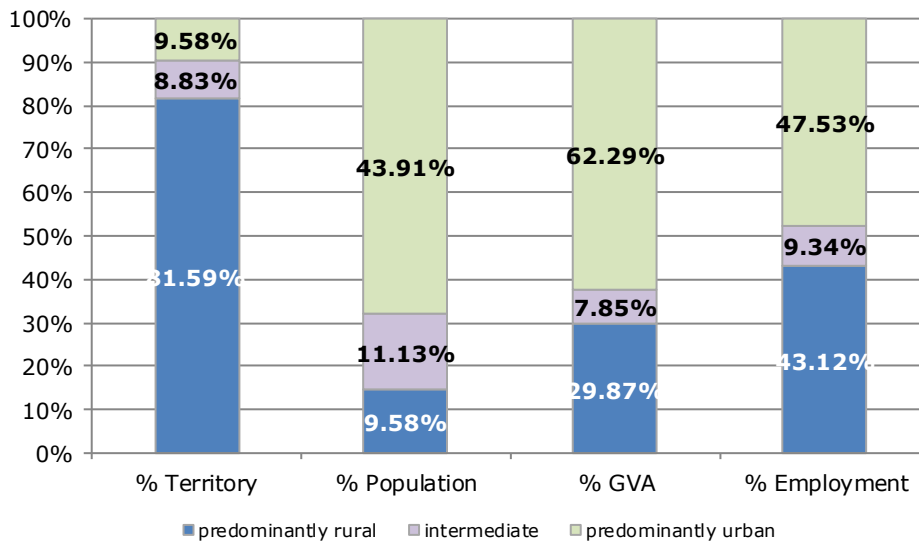
2. POPULATION AND ECONOMY

Importance of rural areas

	Territory (km ²)	Population (persons)	GVA (Million EUR)	Employment (persons)
Year	2015	2016	2014	2016
Predominantly Rural Regions (PR)	36 900	591 599	5 196	264
Intermediate Regions (IR)	3 994	146 506	1 365	57
Predominantly Urban Regions (PU)	4 333	577 839	10 837	291
Total	45 227	1 315 944	17 398	612

Source: Eurostat.

Updated: May 2018



Economic forecast

Indicators	2010	2011	2012	2013	2014	2015	2016	2017	2018	2019
GDP										
In million EUR (current prices)	14 717	16 668	17 935	18 932	19 766	20 348	21 098	22 963	24 557	25 972
Per capita (in PPS; current prices)	16 490	18 481	19 626	20 162	20 950	21 753	21 678	22 618	23 648	24 690
% change over previous period										
GDP growth (at constant prices)	2.3%	7.6%	4.3%	1.9%	2.9%	1.7%	2.1%	4.4%	3.2%	2.8%
GDP deflator	1.7%	5.3%	3.2%	3.6%	1.5%	1.2%	1.6%	4.3%	3.6%	2.9%
Harmonised index of consumer prices	2.7%	5.1%	4.2%	3.2%	0.5%	0.1%	0.8%	3.7%	3.0%	2.7%
Exports (goods and services)	24.0%	24.2%	4.8%	2.8%	2.5%	-0.7%	4.1%	3.8%	4.2%	4.1%
Imports (goods and services)	21.2%	27.2%	9.7%	2.0%	3.6%	-1.8%	5.3%	4.4%	4.4%	4.0%
Net exports of goods and services (million EUR)	935	955	278	532	559	814	814	888	962	1 030
% of total employment										
Unemployment rate	16.7	12.3	10.0	8.6	7.4	6.2	6.8	6.9	7.7	8.5
% of GDP										
Current account balance	1.8	1.3	-1.9	0.5	0.3	2.0	1.9	1.7	1.5	1.4
General government balance	0.2	1.2	-0.3	-0.2	0.7	0.1	-0.3	-0.2	-0.4	-0.5
General government gross debt	6.6	6.1	9.7	10.2	10.7	10.0	9.4	9.2	9.1	9.1

Source: European Commission, Eurostat and Directorate General for Economic and Financial Affairs

Updated: May 2018

Data for 2018 and 2019 is a forecast

3.1. AGRICULTURE: FINANCIAL ASPECTS

CAP expenditure

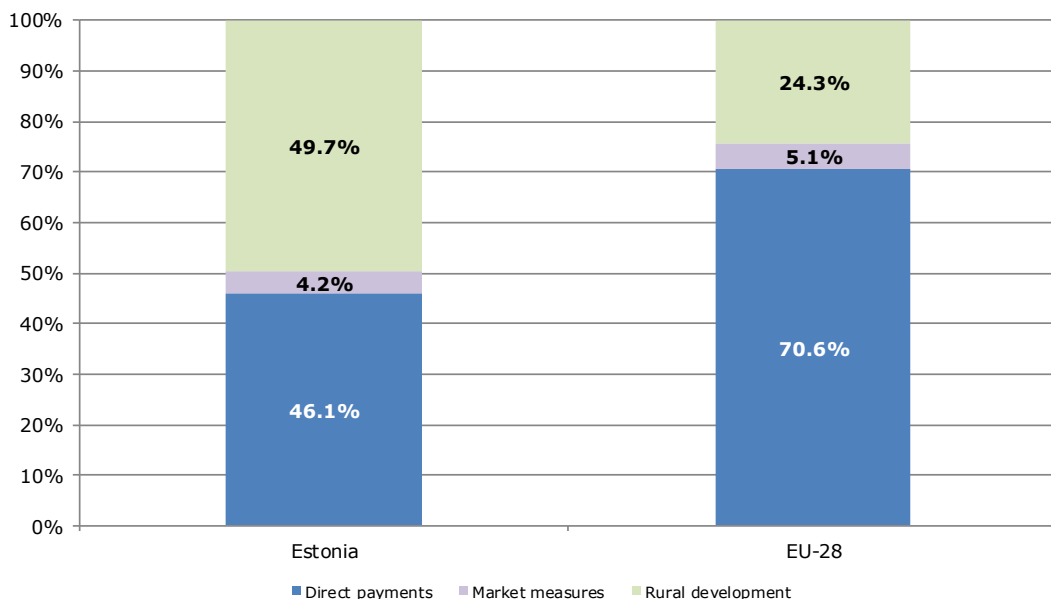
Measures	2017		
	1 000 EUR		
Decoupled direct aids	107 503	43.5%	94.4%
Other direct aids	5 119	2.1%	4.5%
Additional amounts of aid	0	0.0%	0.0%
Reimbursement of direct aids in relation to financial discipline	1 290	0.5%	1.1%
Direct payments	113 912	46.1%	100.0%
Olive oil	0	0.0%	0.0%
Textile plants	0	0.0%	0.0%
Fruit and vegetables	667	0.3%	6.4%
Wine sector	0	0.0%	0.0%
Promotion	192	0.1%	1.9%
Other plant products/measures	0	0.0%	0.0%
Milk and milk products	7 089	2.9%	68.4%
Beef and veal	0	0.0%	0.0%
Sheepmeat and goatmeat	0	0.0%	0.0%
Pigmeat, eggs, poultry and other	2 412	1.0%	23.3%
School schemes	0	0.0%	0.0%
Market measures	10 360	4.2%	100%
Rural development	122 865	49.7%	
TOTAL	247 137	100.0%	

Note: Expenditure in commitments for direct payments and market measures; ceilings of support for rural development.

Source: European Commission, Directorate General for Agriculture and Rural Development

Updated: May 2018

Distribution of CAP expenditure



3.2. AGRICULTURE: FINANCIAL ASPECTS

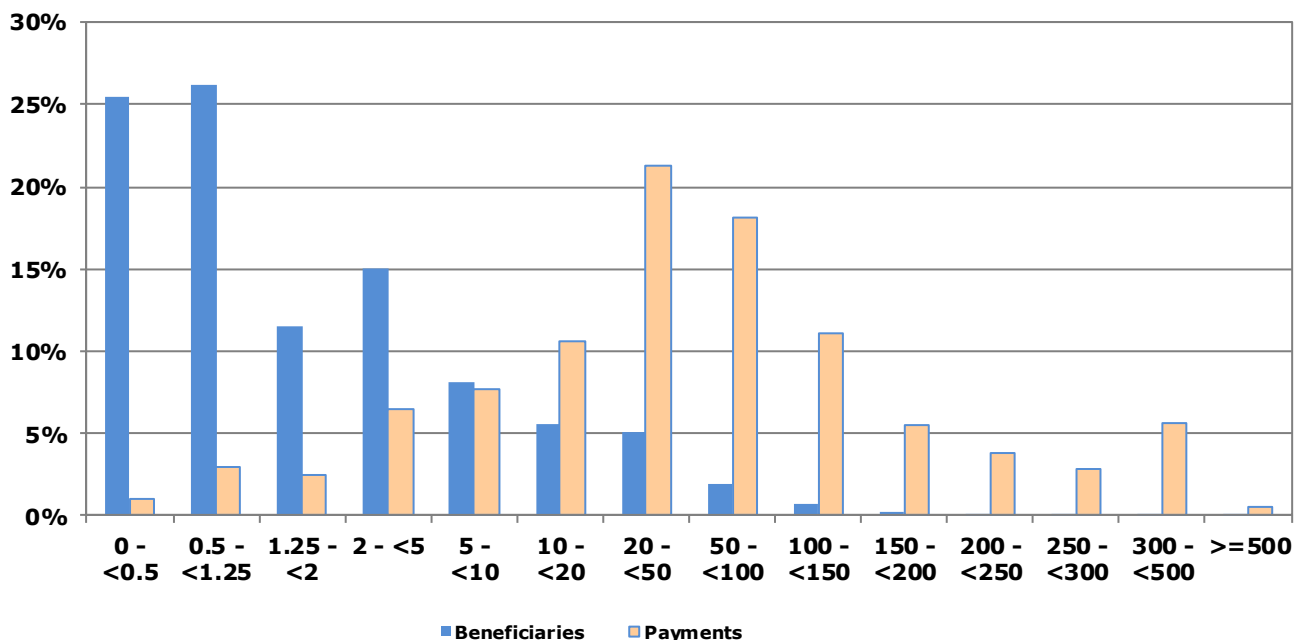
Distribution of direct aids to the producers

Size-class of aid (all direct payments)	Financial year 2017			
	Beneficiaries		Payments in EUR	
	x 1 000	% of total	x 1 000	% of total
< 0 €	-	-	-	-
≥ 0 and < 500 €	3.93	25.41%	1 119	1.0%
≥ 500 and < 1 250 €	4.06	26.25%	3 400	3.0%
≥ 1 250 and < 2 000 €	1.78	11.49%	2 798	2.5%
≥ 2 000 and < 5 000 €	2.33	15.06%	7 342	6.4%
≥ 5 000 and < 10 000 €	1.25	8.08%	8 796	7.7%
≥ 10 000 and < 20 000 €	0.86	5.54%	12 129	10.6%
≥ 20 000 and < 50 000 €	0.78	5.04%	24 259	21.3%
≥ 50 000 and < 100 000 €	0.30	1.92%	20 604	18.1%
≥ 100 000 and < 150 000 €	0.10	0.67%	12 608	11.1%
≥ 150 000 and < 200 000 €	0.04	0.23%	6 251	5.5%
≥ 200 000 and < 250 000 €	0.02	0.13%	4 294	3.8%
≥ 250 000 and < 300 000 €	0.01	0.08%	3 265	2.9%
≥ 300 000 and < 500 000 €	0.02	0.10%	6 394	5.6%
≥ 500 000 €	0.00	0.01%	652	0.6%
Total	15.46	100%	113 911	100%

Source: European Commission, Directorate General for Agriculture and Rural Development.

Note: In order to protect the anonymity of the beneficiaries, numbers less than 10 have been made invisible in this table.

Indicative figures on the distribution of direct aid by size-class of aid (1 000 EUR)



4.1. AGRICULTURE: ECONOMIC ACCOUNTS

Agricultural output

Output components (constant prices)	2015	2016	2017		
	Million EUR		Million EUR	% of total	% of EU-28
Cereals:	183	95	142	21.8%	0.3%
Wheat and spelt	99	50	81	12.4%	0.4%
Rye and meslin	5	3	5	0.8%	0.6%
Barley	66	36	45	6.9%	0.6%
Oats and summer cereal mixtures	7	5	8	1.2%	0.6%
Grain maize	0	0	0	0.0%	0.0%
Rice	0	0	0	0.0%	0.0%
Other cereals	6	2	3	0.5%	0.2%
Industrial crops:	85	60	75	11.5%	0.4%
Oil seeds and oleaginous fruits	64	32	49	7.5%	0.4%
Protein crops	13	18	12	1.8%	0.9%
Raw tobacco	0	0	0	0.0%	0.0%
Sugar beet	0	0	0	0.0%	0.0%
Other industrial crops	8	10	14	2.2%	0.4%
Forage plants	67	51	47	7.3%	0.2%
Vegetables and horticultural products	38	31	30	4.6%	0.1%
Potatoes	24	28	6	0.9%	0.1%
Fruits	7	5	8	1.2%	0.0%
Wine	0	0	0	0.0%	0.0%
Olive oil	0	0	0	0.0%	0.0%
Other crop products	1	1	1	0.1%	0.0%
Crop output	404	271	309	47.3%	0.2%
Animals:	122	123	124	19.0%	0.1%
Cattle	35	40	41	6.3%	0.1%
Pigs	59	54	57	8.8%	0.2%
Equines	0	0	0	0.0%	0.0%
Sheep and goats	2	2	2	0.3%	0.0%
Poultry	27	27	24	3.7%	0.1%
Other animals	0	0	0	0.0%	0.0%
Animal products:	175	168	220	33.6%	0.3%
Milk	154	150	201	30.8%	0.4%
Eggs	11	10	11	1.6%	0.1%
Other animal products	11	8	8	1.2%	0.3%
Animal output	298	291	344	52.7%	0.2%
Agricultural goods output	702	562	653	100.0%	0.2%

Source: Eurostat, Economic Accounts for Agriculture (values at real producer prices).

Updated: May 2018

4.2. AGRICULTURE: ECONOMIC ACCOUNTS

Agricultural input

Input components	2015	2016	2017	2016/2015	2017/2016
	Million EUR			% Change	
Seeds and planting stock	24	22	19	-7.7%	-15.2%
Energy	60	50	68	-16.5%	35.3%
Fertilisers and soil improvers	50	58	51	16.7%	-12.7%
Plant protection products	24	24	23	3.7%	-4.3%
Veterinary expenses	12	11	11	-8.0%	-3.4%
Feedingstuffs	209	193	184	-7.7%	-4.3%
Maintenance of materials	32	33	31	2.4%	-3.4%
Maintenance of buildings	7	5	5	-21.1%	-3.1%
Agricultural services	38	37	35	-3.7%	-2.9%
Other goods and services	110	72	102	-34.7%	42.1%
Total intermediate consumption	570	510	537	-10.4%	5.2%
Fixed capital consumption	240	129	204	-46.3%	58.4%

Note: 2017 data are estimates and may still change

Source: Eurostat, Economic Accounts for Agriculture: values at real basic prices (2010 = 100)

Updated: May 2018

Agricultural income

Values at basic prices	2015	2016	2017	2016/2015	2017/2016
	Million EUR			% Change	
Output of the agricultural "industry":	791	631	721	-20.2%	14.1%
Crop output	404	271	309	-33.1%	14.2%
Animal output:	298	291	344	-2.4%	18.2%
<i>Animals</i>	122	123	124	0.3%	1.2%
<i>Animal products</i>	175	168	220	-4.2%	30.6%
Agricultural services	38	37	35	-3.7%	-3.0%
Secondary activities	51	33	32	-34.2%	-3.0%
- Intermediate consumption	570	510	537	-10.4%	5.2%
= Gross value added at basic prices	240	129	204	-46.3%	58.4%
- Consumption of fixed capital	106	104	104	-1.9%	-0.7%
- Taxes	4	3	3	-21.8%	-2.5%
+ Subsidies	130	143	156	10.1%	9.6%
= Factor income	259	164	253	-36.7%	54.8%
Agricultural income* (2010=100)	103.2	65.1	100.7	-36.9%	54.7%

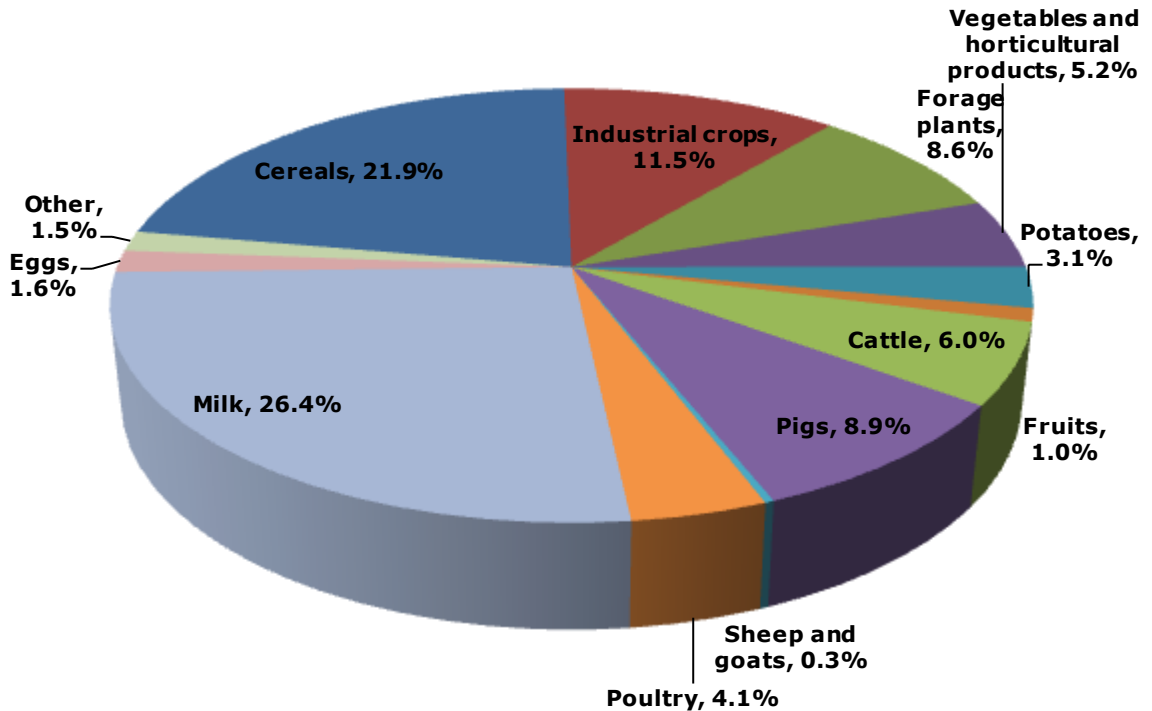
Note: 2017 data are estimates and may still change

Source: Eurostat, Economic Accounts for Agriculture (values at real prices; constant prices for *Indicator A - see definition at the end of this document).

Updated: May 2018

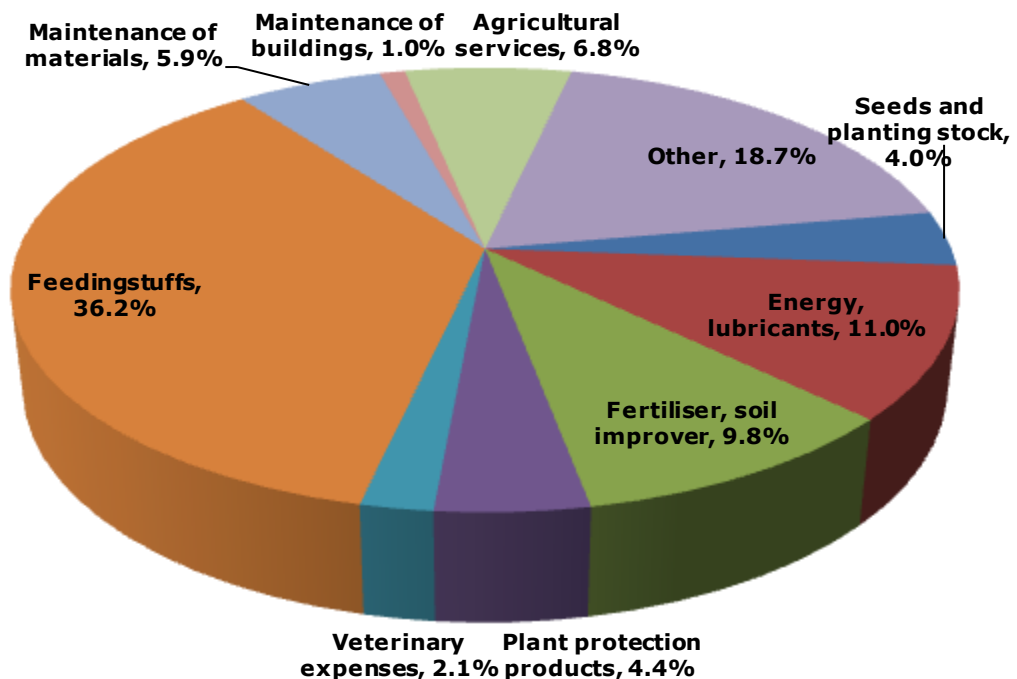
4.3. AGRICULTURE: ECONOMIC ACCOUNTS

Output components (2015-2017 average)



Source: Eurostat, Economic Accounts for Agriculture (values at real producer prices)
Updated: May 2018

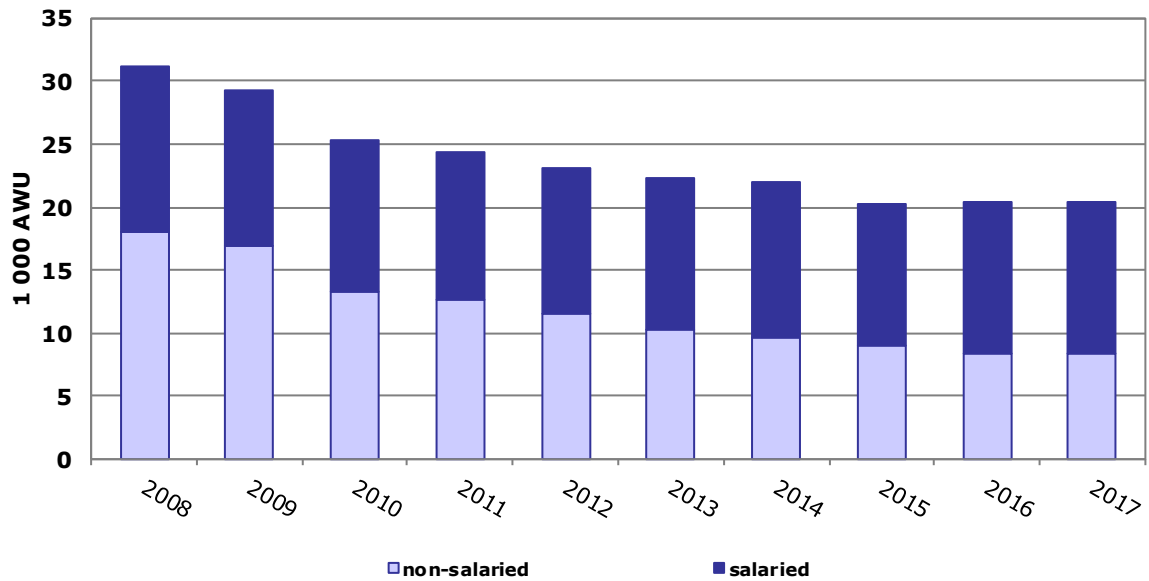
Intermediate consumption (2015-2017 average)



Source: Eurostat, Economic Accounts for Agriculture (values at real basic price)
Updated: May 2018

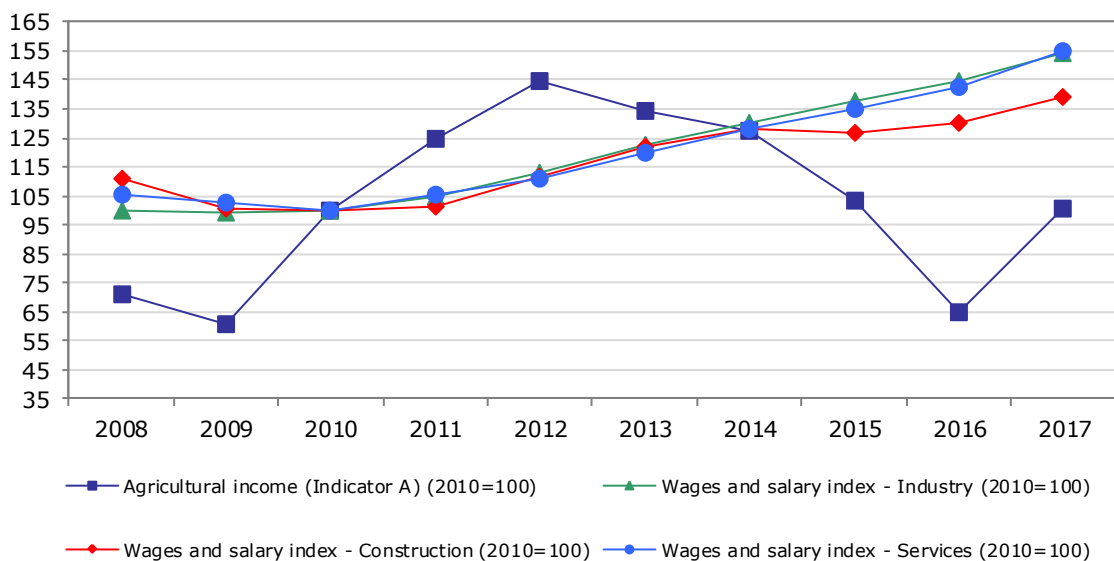
4.4. AGRICULTURE: ECONOMIC ACCOUNTS

Evolution of agricultural labour input



Source: Eurostat Updated: May 2018

Evolution of agricultural income (*) compared to wages and salaries in other sectors of the economy

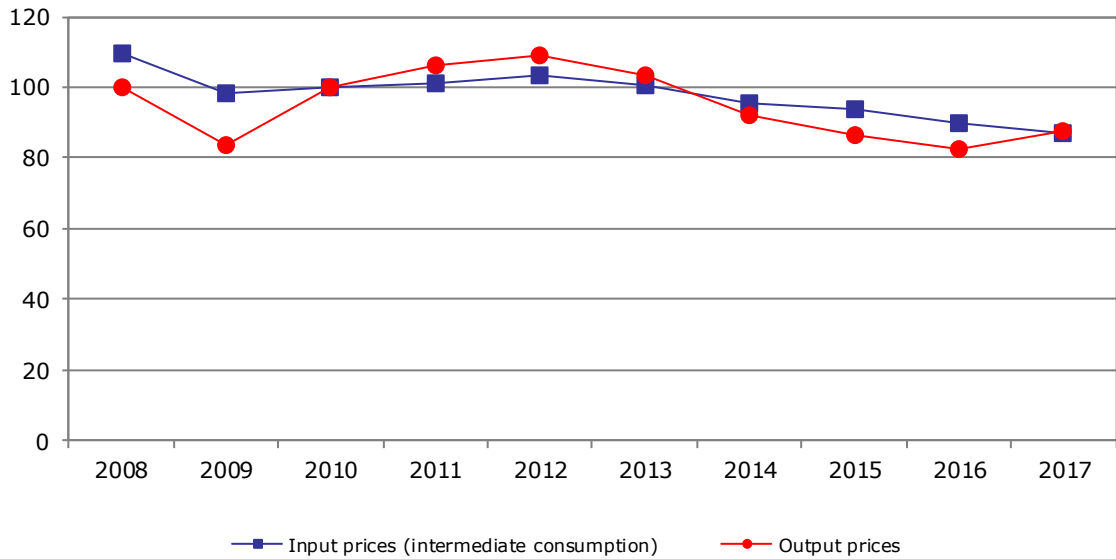


Source: Eurostat Updated: May 2018

(*) The so-called indicator A is the real net value added at factor cost of agriculture per annual work unit (AWU). The net value added at factor cost (factor income) is calculated by subtracting the consumption of fixed capital from gross value added at basic prices and adding the value of subsidies less taxes. The AWU is defined as the work volume corresponding to one full-time employed worked.

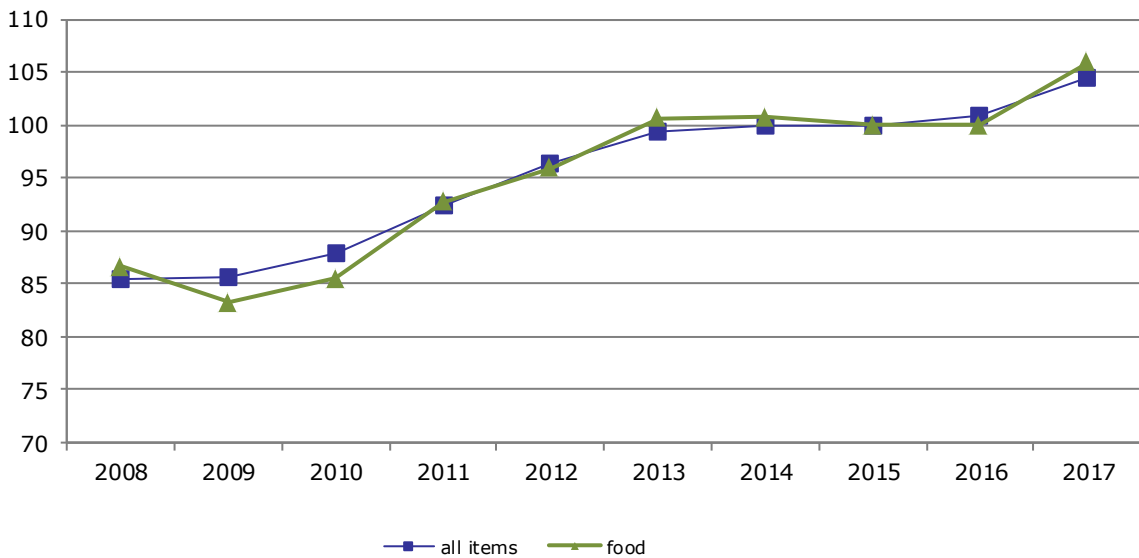
4.5. AGRICULTURE: ECONOMIC ACCOUNTS

Evolution of agricultural input and output prices



Source: Eurostat Updated: May 2018

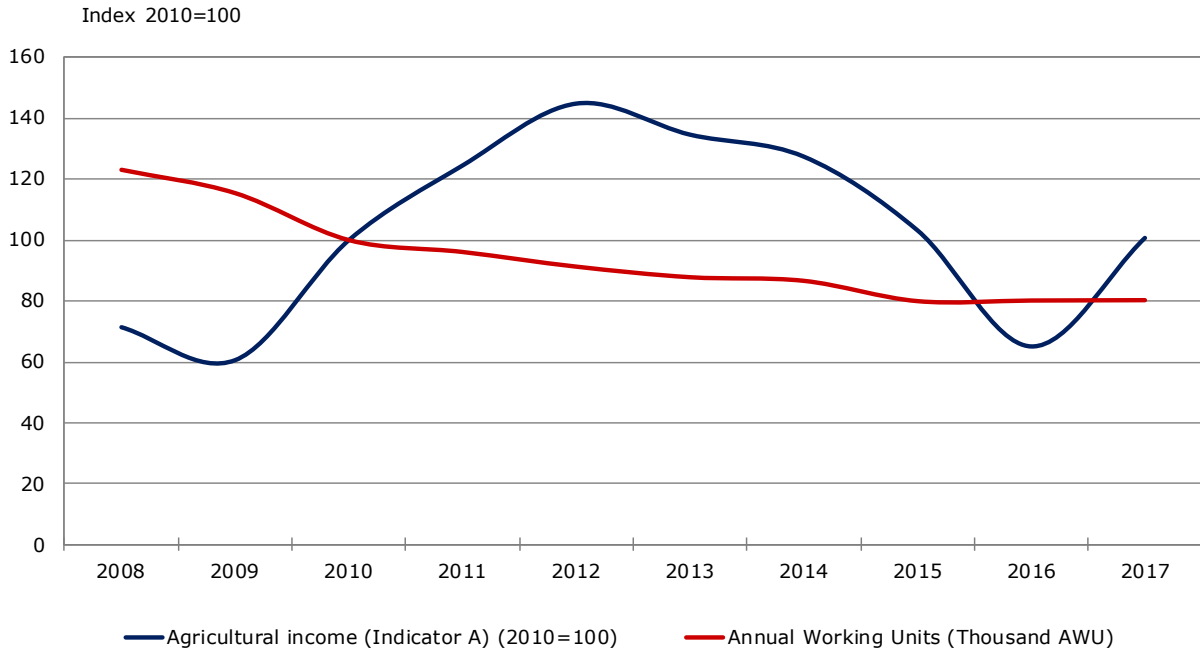
Evolution of harmonised indices of consumer prices



Source: Eurostat Updated: May 2018

4.6. AGRICULTURE: ECONOMIC ACCOUNTS

Farmers' income and labour development index (real terms)



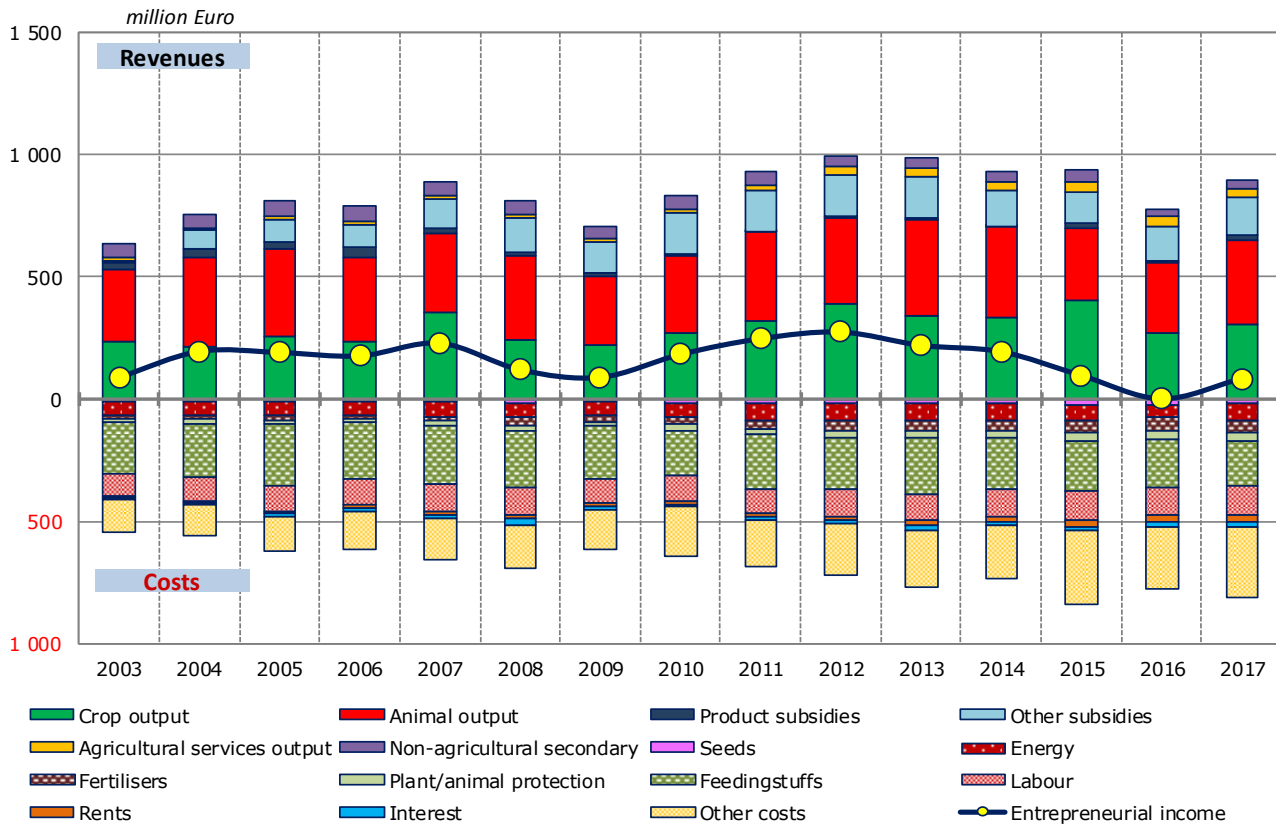
Source: Eurostat and DG Agriculture and Rural Development

Updated: May 2018

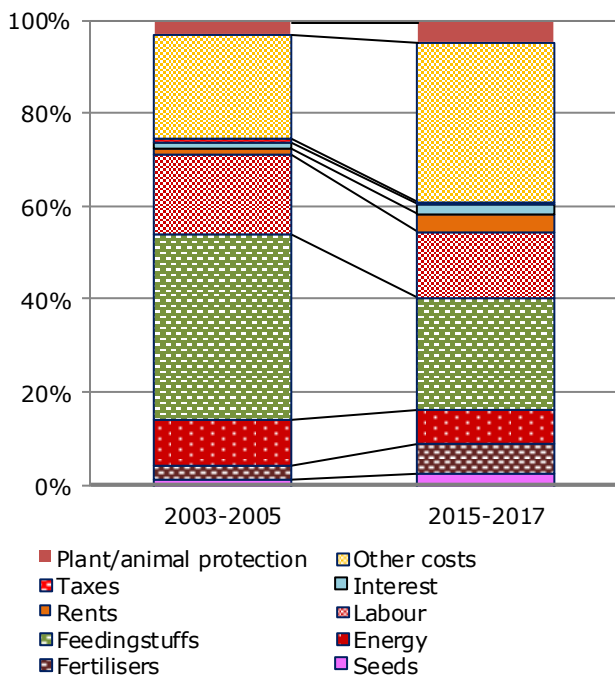
(*) The so-called indicator A is the real net value added at factor cost of agriculture per annual work unit (AWU). The net value added at factor cost (factor income) is calculated by subtracting the consumption of fixed capital from gross value added at basic prices and adding the value of subsidies less taxes. The AWU is defined as the work volume corresponding to one full-time employed worked.

4.7. AGRICULTURE: ECONOMIC ACCOUNTS

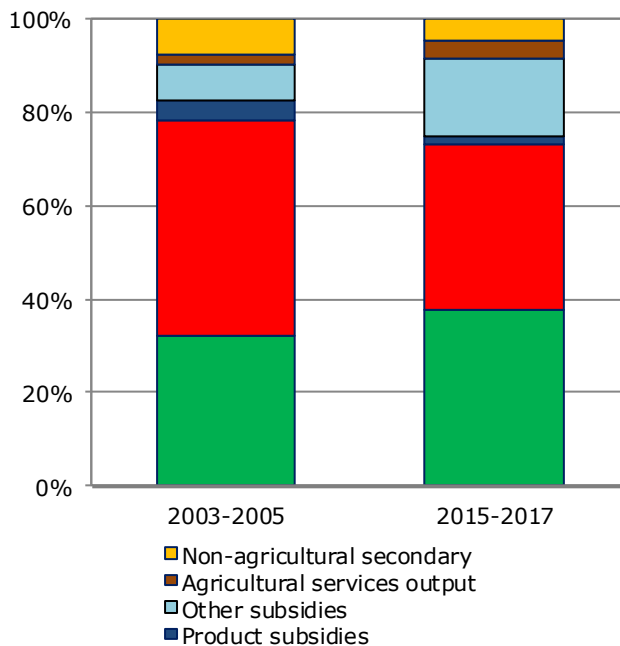
Agricultural income (real prices)



Cost Structure



Revenue Structure



5.1. AGRICULTURAL TRADE

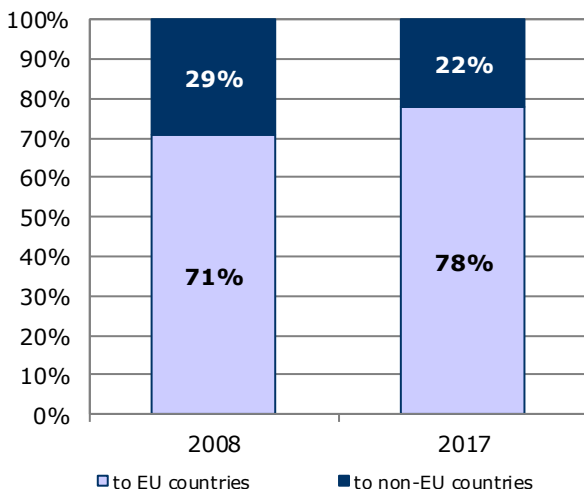
Agricultural trade in 2017

By category of product	Total trade	Trade with EU countries		Trade with non-EU countries	
	Million EUR	Million EUR	% change 2017/2016	Million EUR	% change 2017/2016
Exports					
Commodities	254.8	158.0	10.8%	96.8	30.81%
Other primary products	236.5	204.5	14.3%	31.9	-26.25%
Processed products	170.4	148.3	13.4%	21.9	130.00%
Food preparations	234.2	172.6	7.9%	61.6	74.87%
Beverages	90.8	80.1	18.8%	10.6	-82.11%
Non edible	59.9	48.0	16.6%	10.8	-26.46%
Total agricultural products	1046.6	811.6	12.6%	233.6	-1.03%
as % of total exports	8.1%	8.8%	-	6.4%	-
Imports					
Commodities	146.5	131.2	21.4%	15.3	-13.5%
Other primary products	355.2	336.3	11.5%	18.9	-7.1%
Processed products	273.0	258.7	11.1%	14.3	-13.2%
Food preparations	350.4	336.8	12.6%	13.6	3.4%
Beverages	127.9	115.9	-26.2%	12.0	-3.6%
Non edible	166.4	156.5	1.7%	10.0	-13.2%
Total agricultural products	1419.4	1335.3	6.6%	84.1	-8.23%
as % of total imports	9.6%	11.2%	-	3.0%	-
Balance					
Commodities	108.3	26.8	-	81.5	-
Other primary products	-118.7	-131.7	-	13.1	-
Processed products	-102.7	-110.4	-	7.6	-
Food preparations	-116.2	-164.2	-	48.0	-
Beverages	-37.1	-35.8	-	-1.4	-
Non edible	-106.5	-108.5	-	0.8	-
Total agricultural products	-372.8	-523.7	-	149.5	-

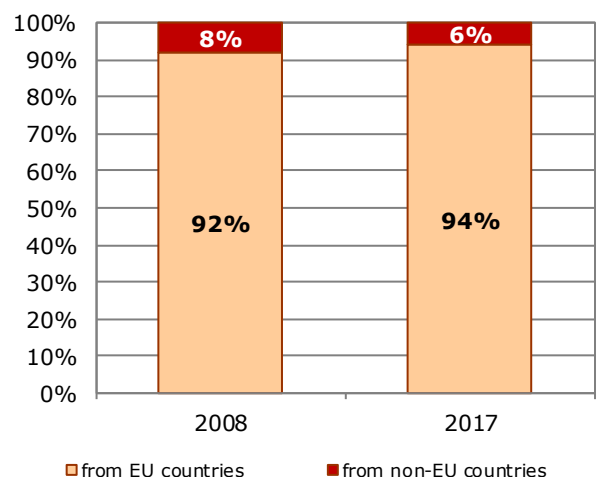
Source: Directorate General for Agriculture and Rural Development, based on COMEXT data

Updated: May 2018

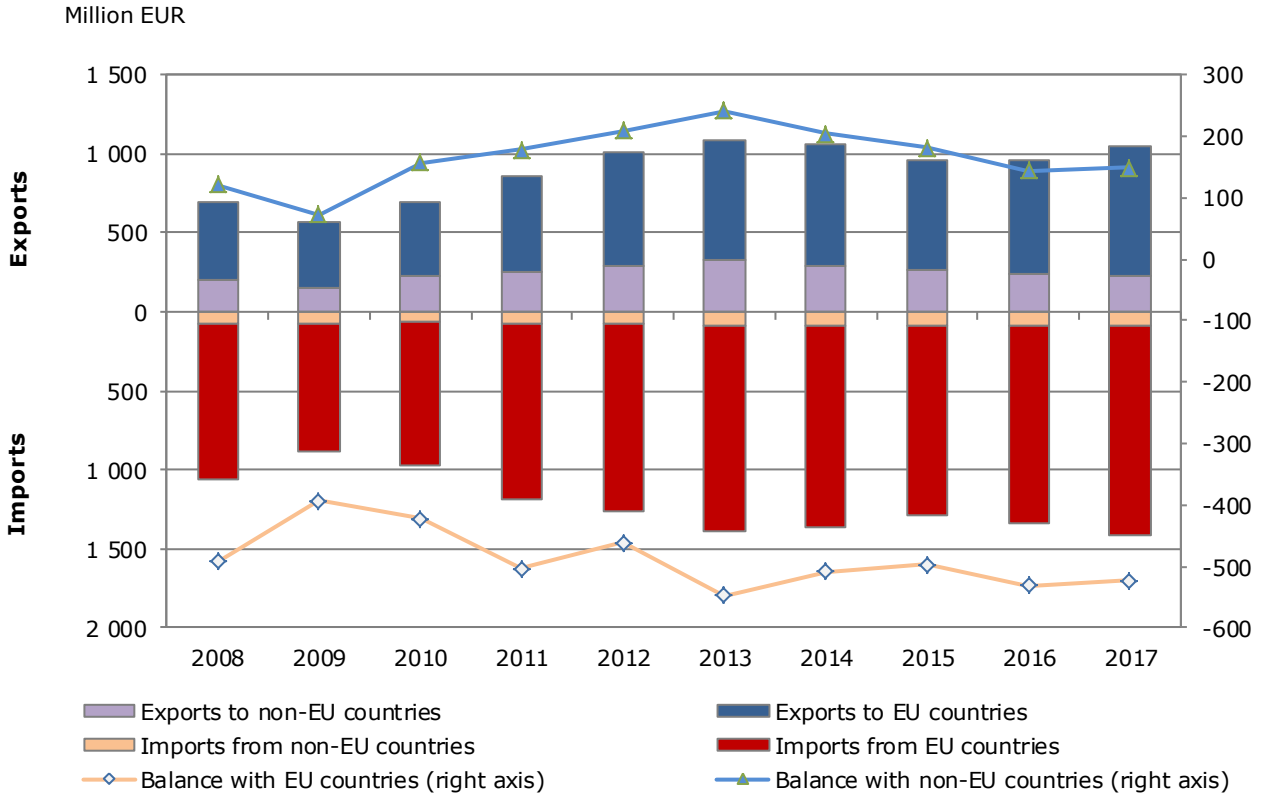
Exports of agricultural products



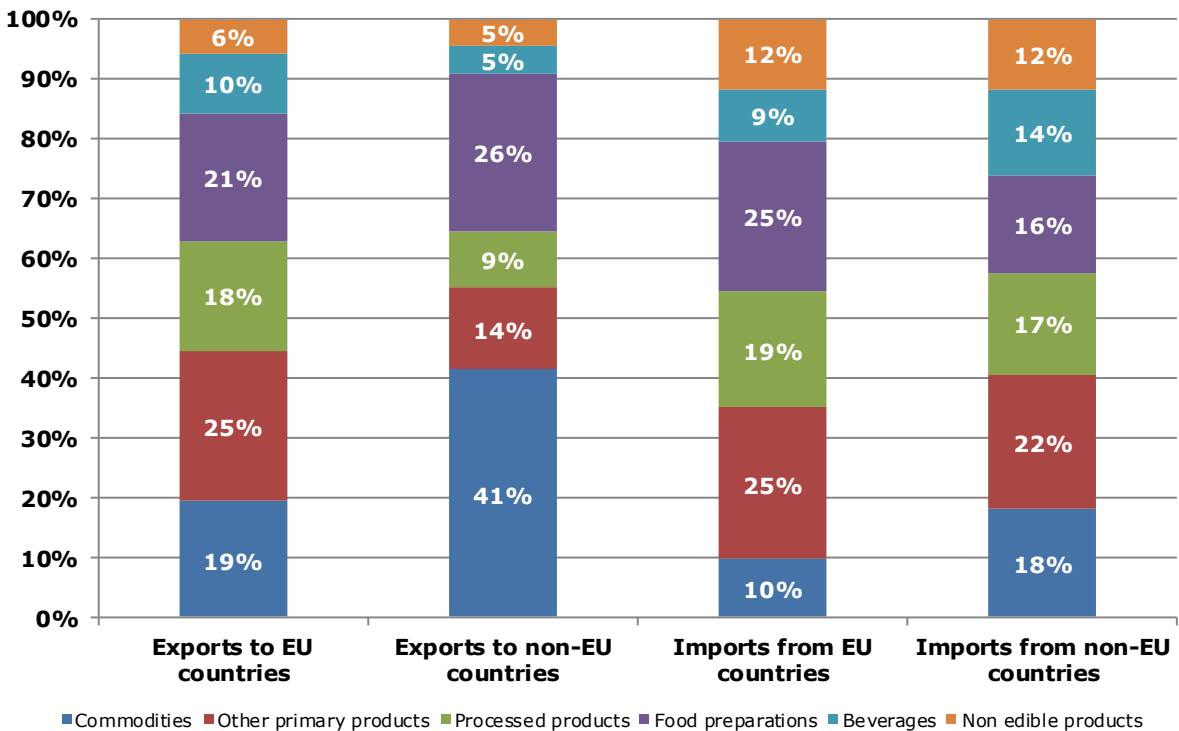
Imports of agricultural products



Evolution of agricultural trade with EU and non-EU countries



Structure of agricultural exports and imports



6.1. FARM STRUCTURE

Structure of agricultural holdings

Holdings		2005		2013	
		Total	%	Total	%
By UAA (*)	< 5 ha	12 570	45.3%	6 340	33.0%
	5-10 ha	5 570	20.1%	3 970	20.7%
	10-20 ha	4 390	15.8%	3 340	17.4%
	20-30 ha	1 650	5.9%	1 400	7.3%
	30-50 ha	1 300	4.7%	1 180	6.1%
	50-100 ha	950	3.4%	1 150	6.0%
	> 100 ha	1 320	4.8%	1 790	9.3%
By economic size (**)	< 4 000 €	17 700	63.8%	11 600	60.4%
	< 8 000 €	4 560	16.4%	2 190	11.4%
	< 15 000 €	2 300	8.3%	1 650	8.6%
	< 25 000 €	1 080	3.9%	1 020	5.3%
	< 50 000 €	930	3.4%	980	5.1%
	< 100 000 €	530	1.9%	760	4.0%
	< 250 000 €	320	1.2%	570	3.0%
	< 500 000 €	140	0.5%	190	1.0%
=/> 500 000 €	180	0.6%	240	1.3%	
By LSU (***)	0	9 910	35.7%	11 660	60.8%
	0-5	13 850	49.9%	4 620	24.1%
	5-10	1 670	6.0%	830	4.3%
	10-15	600	2.2%	450	2.3%
	15-20	360	1.3%	260	1.4%
	20-50	700	2.5%	650	3.4%
	50-100	240	0.9%	290	1.5%
	100-500	290	1.0%	290	1.5%
	> 500	130	0.5%	140	0.7%
By age of holder	< 35 years	1 950	7.0%	1 440	7.5%
	35-44 years	4 840	17.4%	3 230	16.8%
	45-54 years	6 170	22.2%	4 500	23.4%
	55-64 years	6 910	24.9%	4 190	21.8%
	> 64 years	7 880	28.4%	5 830	30.4%
Total	27 750	100	19 190	100	
UAA in 1 000 ha	829		958		
UAA (ha) per holding	29.9		49.9		

Source: Eurostat, Farm Structure Survey

Updated: January 2017

(*) UAA = Utilised agricultural area.

(**) Economic size: The standard output of an agricultural product (crop or livestock), abbreviated as SO, is the average monetary value of the agricultural output at farm-gate price, in euro per hectare or per head of livestock. There is a regional SO coefficient for each product, as an average value over a reference period (5 years, except for the SO 2004 coefficient calculated using the average of 3 years). The sum of all the SO per hectare of crop and per head of livestock in a farm is a measure of its overall [economic size](#), expressed in euro.

(***) LSU = Livestock units. A LSU is equivalent to a dairy cow. The number of animals (heads) is converted into LSU using a set of coefficients reflecting the feed requirements of the different animal categories.

6.2. FARM STRUCTURE

Structure of farm labour force

2013			
Family labour force		Non family labour force	
persons:	30 900		
of which women:	45.0%		
AWUs (*):	10 240	AWUs:	11 820
Holders	Family members	Regular non family labour force	Non regular non family labour force
persons:	persons:	persons:	
16 260	14 640	13 320	
of which women:	of which women:	of which women:	
39.1%	51.5%	69.3%	
AWUs:	AWUs:	AWUs:	AWUs:
5 960	4 280	11 310	510
Total farm labour force (persons)		44 220	
Total farm labour force (AWUs)		22 060	

Source: Eurostat, Farm Structure Survey

Updated: January 2017

* AWUs = Annual work units. An AWU is equivalent to a worker employed on a full time basis for one year.

This document does not necessarily represent the official views of the European Commission
© European Union, 2018 - Reproduction authorised provided the source is acknowledged

Contact: DG Agriculture and Rural Development, Farm Economics Unit

Tel: +32-2-29 75471 / E-mail: Agri-C3@ec.europa.eu